



COLLEGE OF PUBLIC HEALTH
The University of Georgia



Evaluating the Impact of Reallocating Georgia's Funding for Local Public Health Infrastructure

Phaedra Corso, Ph.D.

Be Part of the Solution

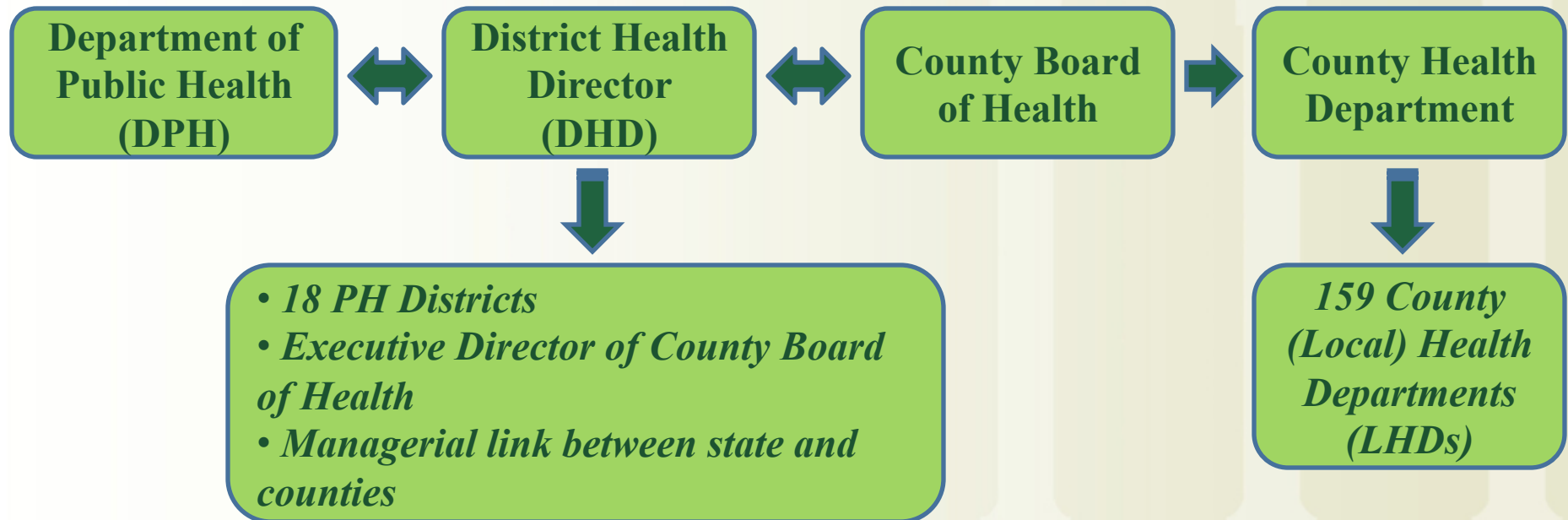


Faculty Disclosure

I have no financial (or otherwise) interests to disclose.

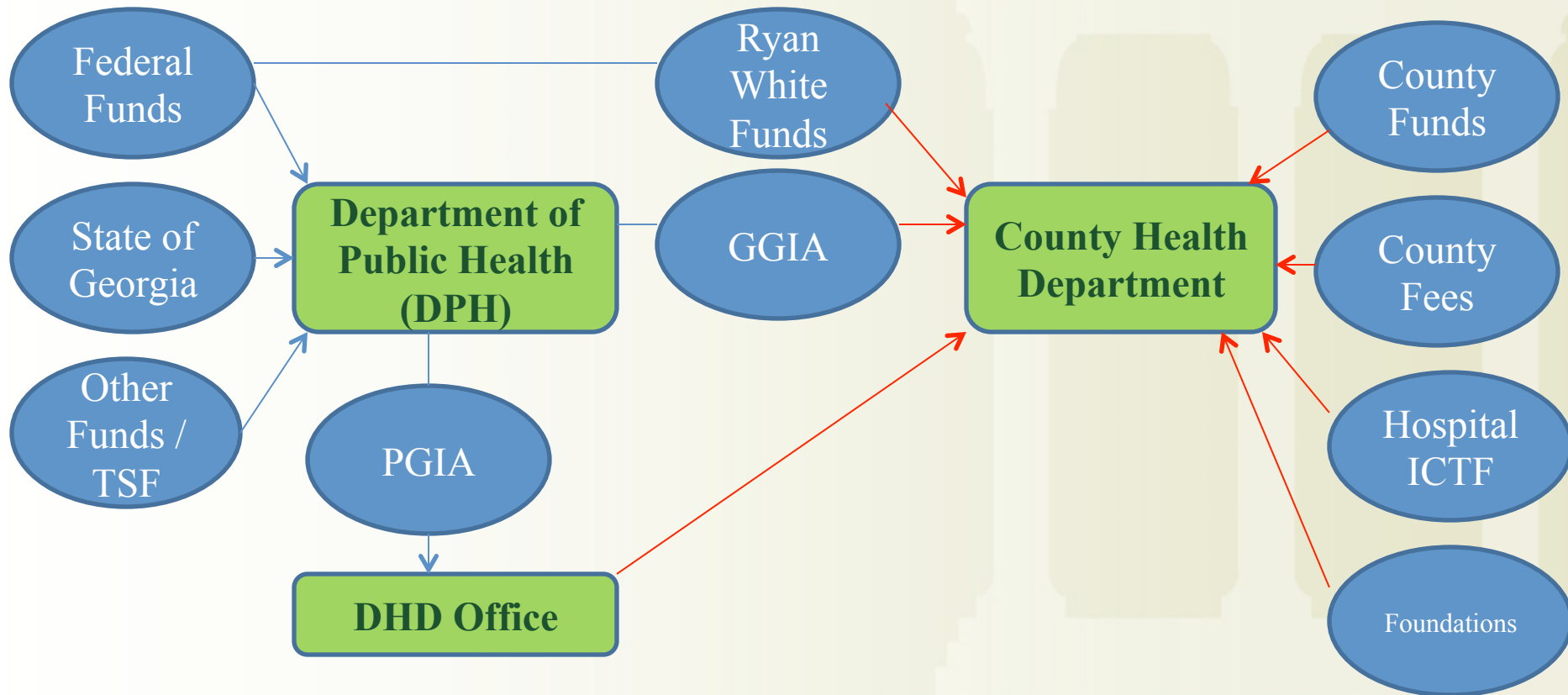


Overview of Public Health Governance in Georgia





Overview of Public Health Finance in Georgia





General Grant-in-Aid (GGIA)

Definition: Those funds which the Department agrees to reimburse the Contractor to support the infrastructure necessary for providing Public Health Services specified in the Official Code of Georgia.

GGIA Allocation Formula (prior to FY2012)

County share of state population (50%) + County tax base share (50%)

GGIA Allocation Formula (since FY2012)

County share of state population (40%) + Poverty share (40%) + Poverty rate (20%)



General Grant-in-Aid (GGIA)

For FY2012 and FY2013:

- **Gaining counties (n=107) - Intervention group**
 - Counties gaining \leq \$10,000 (n=41)
 - Counties gaining $>$ \$10,000 (n=66)
- **'Hold harmless' counties (n=41) - Control group**



General Grant-in-Aid (GGIA)

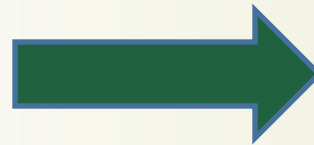
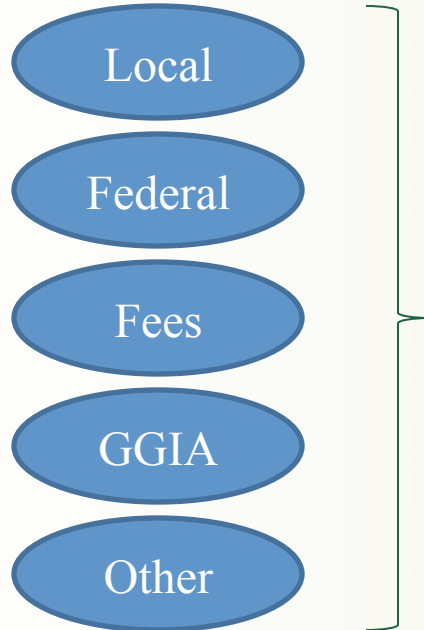
Implementation of the revised GGIA allocation formula:

Fiscal Year (FY)	Phase-in amount	'Hold harmless' provision?
FY2012	15%	Yes
FY2013	30%	Yes
FY2014	45%	Yes
FY2015	60%	?
FY2016	75%	?
FY2017	90%	?
FY2018	100%	?

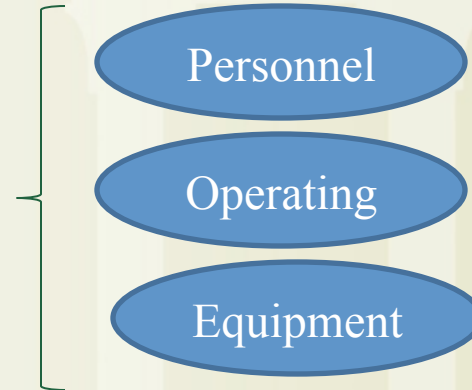


County-level data by fiscal year

Revenue Sources

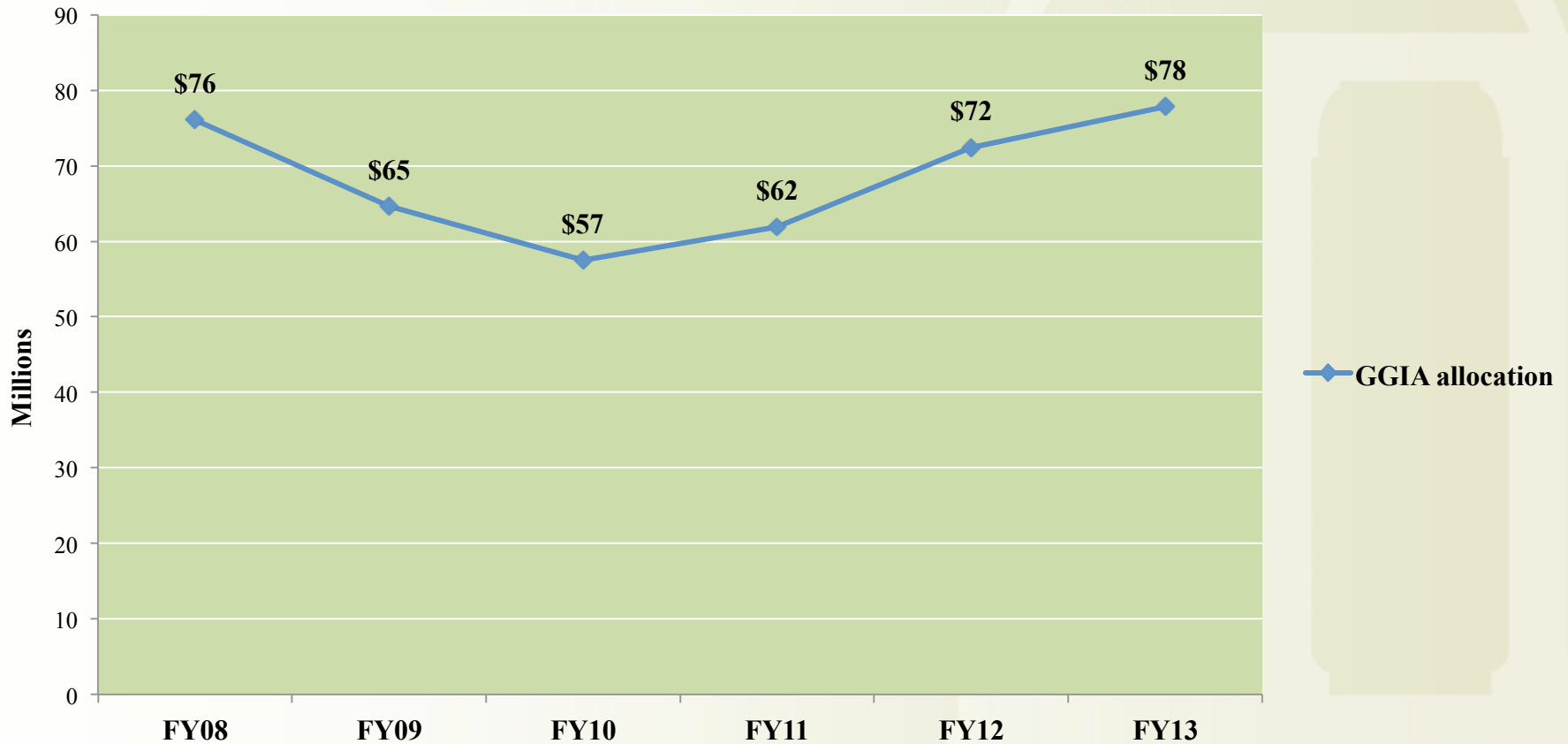


Expenditure Categories





Total GGIA allocation by fiscal year (in millions)





Analytic Model

Quasi-experimental pre/post study design with a qualitative component

4 year county-level budget data pre-GGIA formula change (FY2008 to FY2011)

2 year county-level budget data post-GGIA formula change (FY2012 and FY2013)

‘Gaining’ counties vs. ‘Losing / Hold harmless’ counties

Dependent variable – Personnel; Operating; Equipment

Independent variables – Revenue streams (Local, Federal, Fees, GGIA, and Other)



Multiple Linear Regression

'Gaining' counties (n=107)

Personnel		Operating		Equipment	
FY	GGIA	FY	GGIA	FY	GGIA
FY08	0.81	FY08	0.14	FY08	0.03
FY09	0.75	FY09	0.22	FY09	0.02
FY10	0.72	FY10	0.23	FY10	0.03
FY11	0.55	FY11	0.39	FY11	0.05
FY12	0.59	FY12	0.77	FY12	0.07
FY13	0.23	FY13	0.74	FY13	0.02

'Hold harmless' counties (n=41)

Personnel		Operating		Equipment	
FY	GGIA	FY	GGIA	FY	GGIA
FY08	0.56	FY08	0.39	FY08	0.04
FY09	0.31	FY09	0.68	FY09	
FY10	0.42	FY10	0.53	FY10	0.05
FY11	0.61	FY11	0.33	FY11	0.04
FY12		FY12		FY12	
FY13	0.70	FY13	0.29	FY13	

All coefficients presented are statistically significant (p value<0.05)



Service-level Outcome *Mammography screening*

Data included:

Mammography screenings by county from FY2008 to FY2012

Dependent variable:

County-level per capita mammography screenings by fiscal year
(# of mammography screenings / Female population aged 45 to 74 years)

Independent variables:

County-level per capita revenue (Local, Federal, Fees, GGIA, and Other)
by fiscal year

(Revenue amount / Female population aged 45 to 74 years)



Service-level Outcome *Mammography screening*

'Hold harmless' counties (n=46)

FY	GGIA
FY08	
FY09	
FY10	
FY11	
FY12	

Counties gaining \leq \$10,000 (n=89)

FY	GGIA
FY08	
FY09	
FY10	
FY11	
FY12	0.0002

Counties gaining $>$ \$10,000 (n=24)

FY	GGIA
FY08	
FY09	
FY10	0.0003
FY11	0.0002
FY12	0.0002

All coefficients presented are statistically significant (p value < 0.05)



Qualitative Survey Results

FY2012 – Gaining counties

Response category	Counties with \leq \$10,000 in additional GGIA funding (n=84)	Counties with $>$ \$10,000 in additional GGIA funding (n=24)
Increase in the number of FTEs	3 counties (3.5%)	6 counties (25%)
'Halt the spend down of reserve funds'	50 counties (60%)	9 counties (37%)
Expansion/addition of programs and services	0 counties (0%)	4 counties (17%)



Qualitative Survey Results

FY2013 – Gaining counties

Response category	Counties with \leq \$10,000 in additional GGIA funding (n=39)	Counties with $>$ \$10,000 in additional GGIA funding (n=61)
Increase in the number of FTEs	1 county (2.5%)	7 counties (11.5%)
'Halt the spend down of reserve funds'	12 counties (31%)	14 counties (23%)
Expansion/addition of programs and services	2 counties (5%)	4 counties (6.5%)



Discussion

For FY2012:

- ‘Gaining’ counties - Statistically significant relationship between GGIA and **all** expenditure categories
- ‘Hold harmless’ counties - No statistically significant relationship between GGIA and **any** expenditure categories

For FY2013:

- **All counties** showed a statistically significant relationship between GGIA and expenditure categories
 - *Total GGIA allocation for FY13 > GGIA allocation for FY12*
- Counties gaining \leq \$10,000 in additional GGIA funds **replenish reserve funds**
- Counties gaining $>$ \$10,000 in additional GGIA funds **increase FTEs and expand/add programs and services**
- Future phase-in of the revised GGIA formula



Limitations

- Current accounting expenditure reports do not separate GGIA dollars from other fund sources at the local level
- County-level reserve fund amount and utilization information not available
- ‘Hold harmless’ provision



Thank You.....

- Robert Wood Johnson Foundation
- National Coordination Center for Public Health Services and Systems Research (PHSSR)
- Georgia Department of Public Health
 - Dr. Brenda Fitzgerald, Georgia Commissioner of Public Health
 - Office of the District Health Director (18 Georgia health districts)
 - Luke Fiedorowicz, Director of Science, Research and Academic Affairs
 - Demetrice Jordan, Data Coordinator
- Economic Evaluation Research Group (EERG), UGA
 - Dr. Samir Desai
 - Kenasia Brown