

Research in Action!

Wisconsin Public Health Practice-Based Research Network



Julie Willems Van Dijk, RN, PhD
UW-Population Health Institute
Sue Kunferman, RN, MSN
Wood County Health Department

**Community Engagement in Research
Collaboration to Improve Rural Health
June 7, 2012**

Agenda



- Background and history of the Wisconsin Public Health Practice-Based Research Network (WPHPBRN)
 - Overview of public health systems and services research
 - Current WPHPBRN research projects
 - Challenges and opportunities
 - How to become involved
-

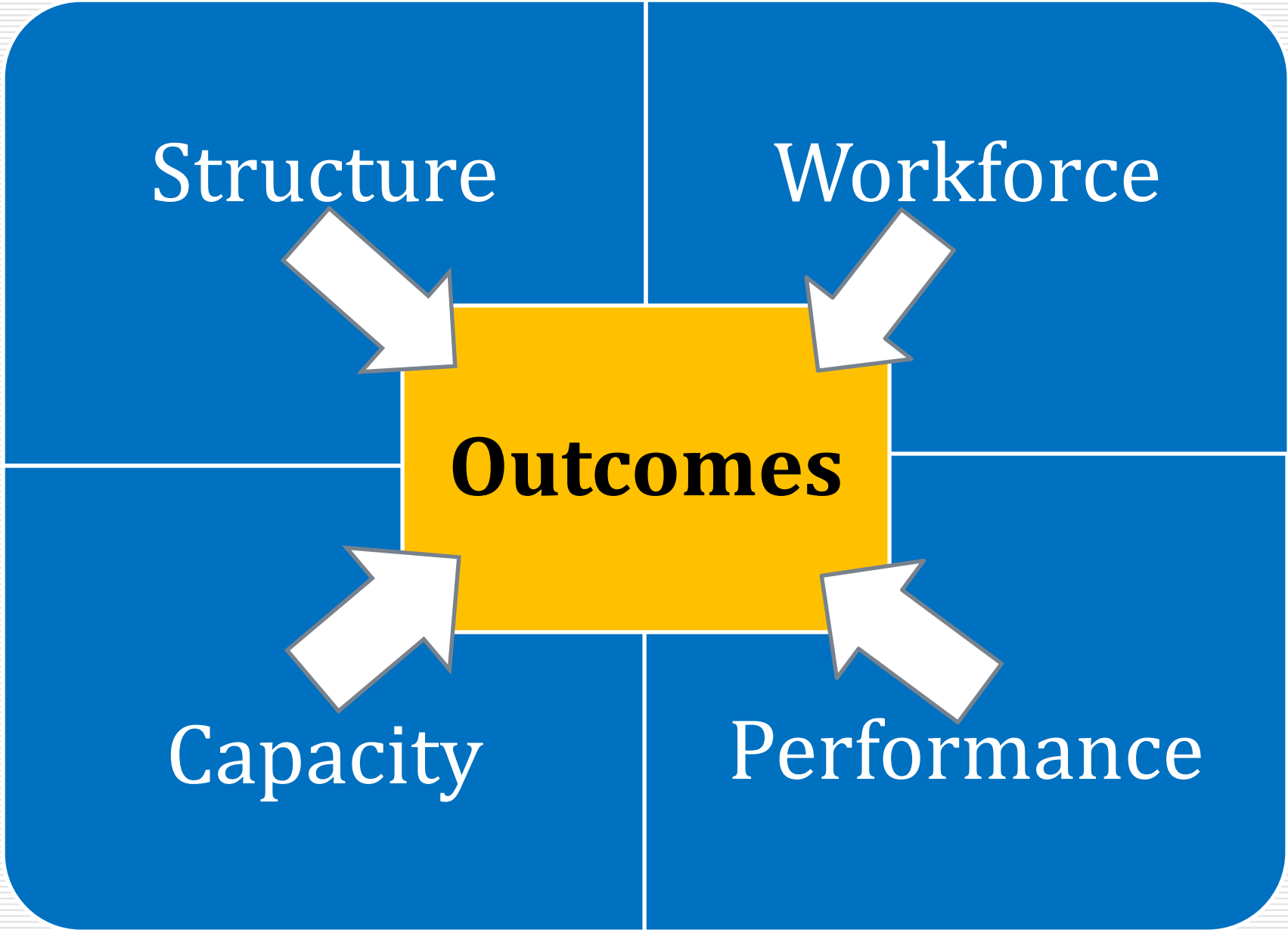
Public health systems and services research



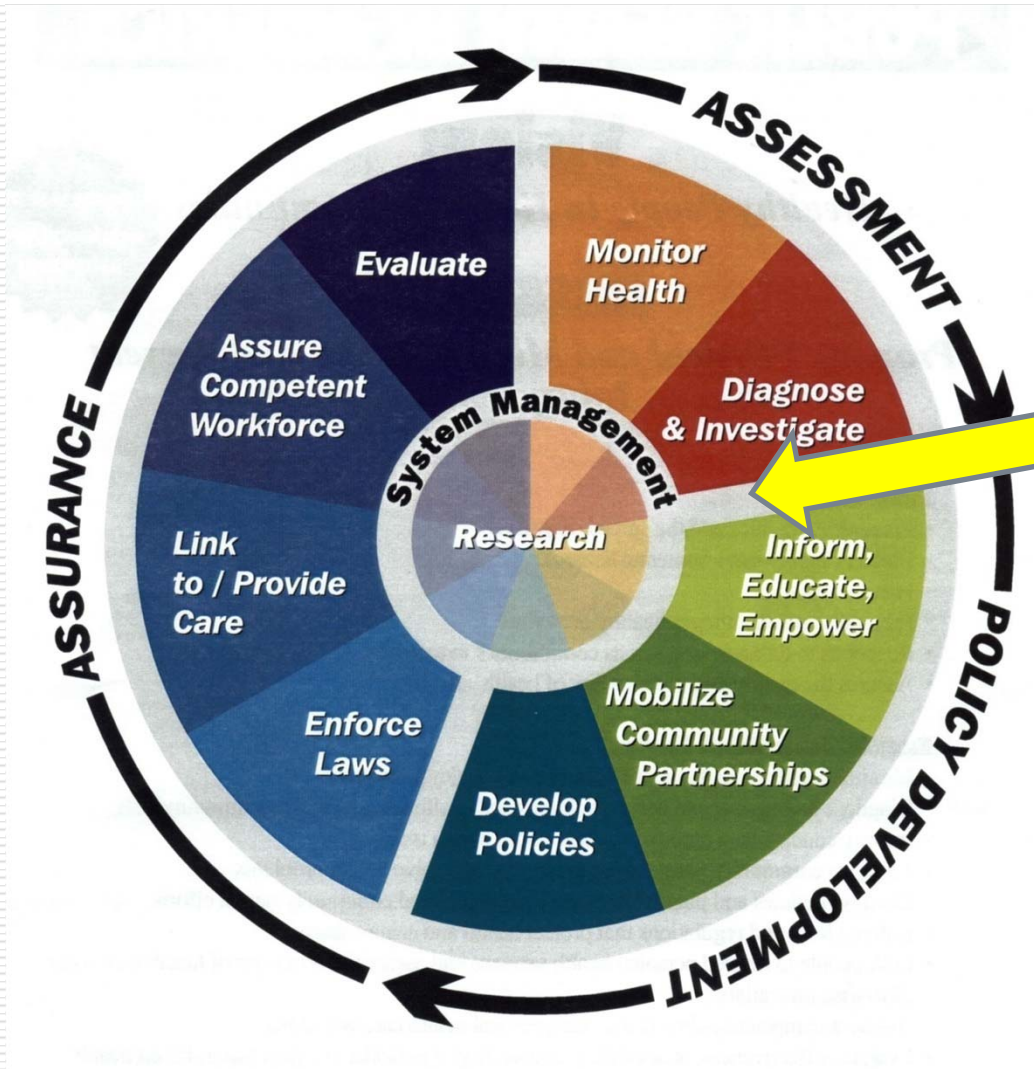
“ A field of study that examines the organization, financing, and delivery of public health services within communities, and the impact of these services on public health”

Mays, Halverson, & Scutchfield, 2009





PHSSR and Essential Services



PHSSR
applicable for
all Essential
Services

What is a **Public Health** PBRN?



“An organized group of public health agencies engaged in ongoing collaborations with public health research centers to conduct rigorous, applied studies designed to identify ways of improving the organization, financing and delivery of public health services in real world community settings”.

Robert Wood Johnson Request for Proposal Guidance, July 2008

Study types for PBRN research



- Comparative case study
- Observational
- Adoption/diffusion/implementation
- Quality improvement
- Policy/natural experiments



From G. Mays, 2009

Public Health Practice-Based Research Networks Program-RWJF



- The purpose of this project is to use practice-based research networks (PBRNs) to
- (a) expand the volume and quality of research on **public health systems and services**, and
 - (b) enhance the ability of state and local public health organizations to translate and apply research findings through evidence-based practice.

Public Health PBRN National Coordinating Center



Dr. Glen Mays, Director, University of Kentucky

- Round 1
 - Colorado
 - Kentucky
 - Massachusetts
 - North Carolina
 - Washington
- Round 2
 - Connecticut
 - Florida
 - Ohio
 - Minnesota
 - Nebraska
 - New York
 - **Wisconsin**

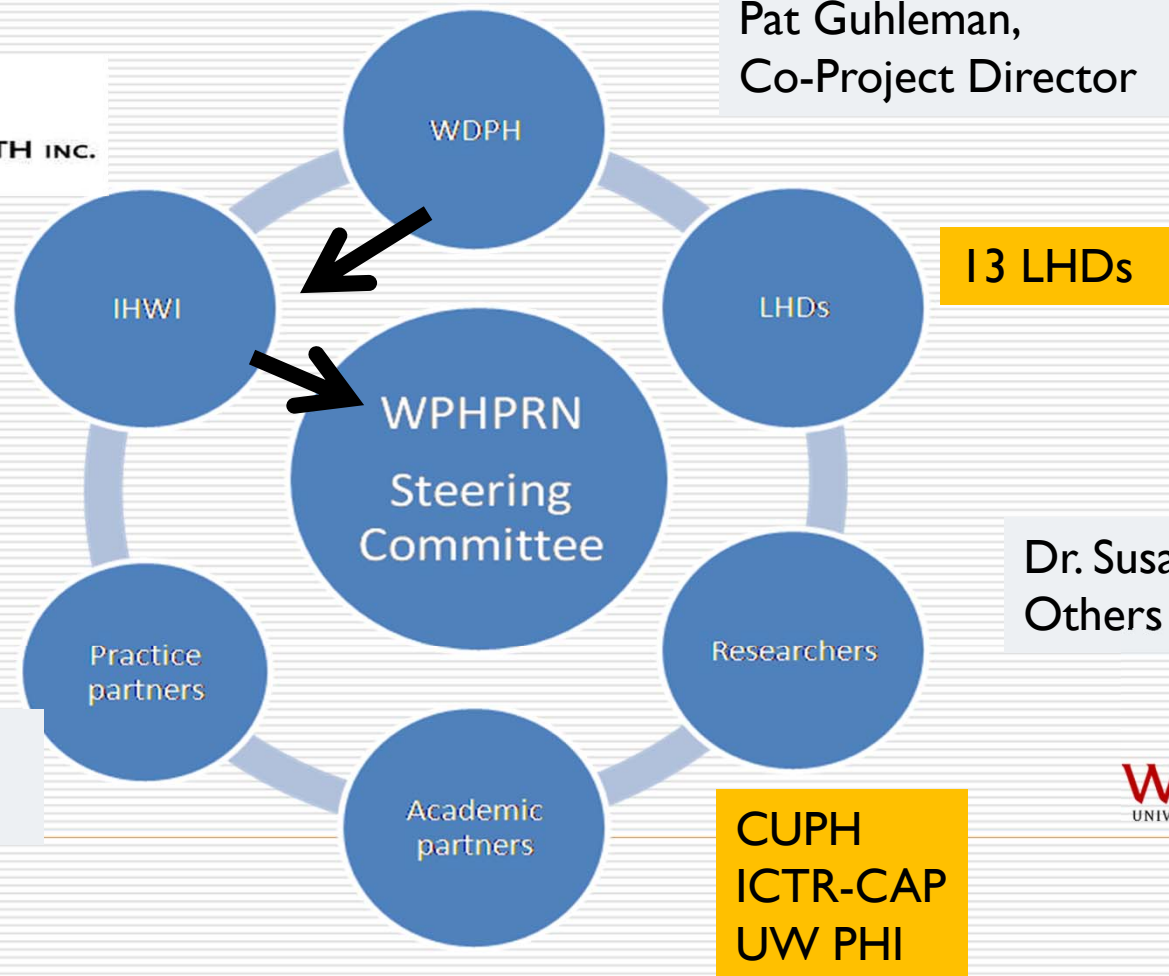
Wisconsin Public Health Practice-Based Research Network



Managing agency:
Bev Larson



Lead agency: WDPH
Pat Guhleman,
Co-Project Director



Dr. Susan Zahner
Others



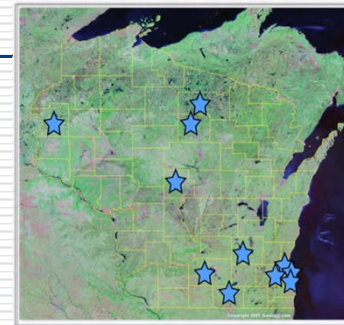
WPHA
WALHDAB

CUPH
ICTR-CAP
UW PHI

LHD Partners



- Dodge County
- Greenfield
- Lincoln County
- Public Health-Madison Dane County
- Milwaukee
- Oak Creek
- Oneida County
- Oshkosh
- Polk County
- Rock County
- Watertown
- West Allis
- Wood County



- *Identify and prioritize research ideas*
- *Participate in the pilot study*
- *Advise on a structural and functional framework for the network that would be sustainable and attractive for new partners*

Project Objectives



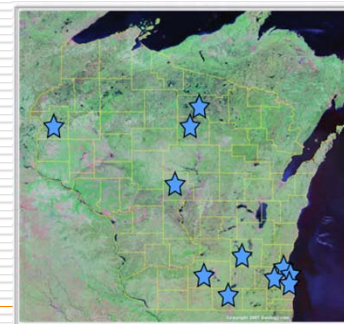
1. **Establish a sustainable system** for practice-based research on public health systems and services.
 2. Increase **PHSSR capacity**
 3. Encourage and facilitate **linkages** between academic researchers and public health practice partners
 4. To add to the **evidence base** for effective public health systems and services.
-

Major activities



- Establish steering committee
- Set up network structure & communications
- Created project review and selection criteria
- Inventory PHSSR projects and researchers
- Identify PHSSR priorities for Wisconsin
- A small scale research project

2009-2011
\$90,000



Inventory of research since 2005 & Priority research questions for LHD



| PHSSR Category | Research Question | Inventory |
|-------------------------------|-------------------|-----------|
| Finance | 5% | 4.4% |
| Workforce | 17% | 13.3% |
| Services/Interventions | 24% | 37.8% |
| Laws/Policies | 13% | 4.4% |
| Partnership Strategies | 7% | 15.6% |
| Public Health/Related Systems | 7% | 24.4% |
| Organization/Structure | 27% | 0% |

N=75 RQ

N=45 projects

Source: Zahner, SJ, Guhleman, P, Vaughn-Jering, K, Wilson, T., Wisconsin PHSSR Inventory, Poster presentation at Keenland Conference, April 13, 2011.

WPHPBRN Research Projects



- ***What is the utility of an electronic record system using standard taxonomies in documenting the contribution of public health professionals to community health improvement?***
 - PI: Mary Jo Baisch, PhD, UW-Milwaukee
 - RWJF Quick Strike (\$25,000)
 - Status: Completed/manuscript accepted
-

WPHPBRN Research Projects



- ***What is the impact of recession on LHD financing and budgeting practices in Wisconsin?***
 - Project team:
 - Susan Zahner, DrPH, UW-Madison School of Nursing
 - Andrew Reschovsky, PhD La Follette School of Public Affairs
 - Senay Goitom, UW-Madison LaFollette School of Public Affairs
 - Project Advisors: Terry Brandenburg, Sue Kunferman, Darren Rausch, David Caes
 - RWJF; ICTR-CAP (NIH- 1UL1RR025011) Health Policy Assistantship
 - Status: Completed, presentations done, manuscript in process

WPHPBRN Research Projects



- ***Forecasting the Impact of the Economic Recession on the Financing of Local Public Health Departments in Wisconsin***
 - Project team:
 - Andrew Reschovsky, PhD, La Follette School of Public Affairs
 - Kohei Enami, School of Medicine and Public Health
 - Senay Goitom, LaFollette School of Public Affairs
 - Susan Zahner, School of Nursing
 - Project Advisors: Terry Brandenburg, Sue Kunferman, Darren Rausch, David Caes
 - RWJF Quick Strike (\$25,000); ICTR-CAP (NIH- 1UL1RR025011) Health Policy Assistantship

- Status: Active

WPHPBRN Research Projects



- ***Current and planned shared service arrangements among Wisconsin local and tribal health departments***
 - Project team:
 - Nancy Young, IWHI
 - Kusuma Madamala, Consultant, IWHI
 - Lieske Giese, Wisconsin Division of Public Health
 - Aleena Hernandez, Red Star Innovations
 - Dan Stier, JD, Network for Public Health Law
 - Dr. Ema Uko-Ebasi, MPH Student MCW
 - RWJF Quick Strike (\$25,000)
 - Status: Started April 15, 2012

WPHPBRN Research Projects



- *How can the quality of Wisconsin's community assessments (CHA) and community health improvement plans and processes (CHIPPP) be measured?*
 - *What factors are related to higher quality CHA and CHIPPPs?*
 - Project team:
 - Julie Willems Van Dijk, PhD, UW-PHI
 - Bridget Booske Catlin, PhD, UW-PHI
 - RWJF Research Implementation Award (\$150,000)
 - Status: Active
-

Three Stages



- Develop CHIPP Quality Measurement Tool
 - Measure Wisconsin's CHIPPs
 - Conduct a comparative analysis to determine if there are any structural or process factors that predict higher quality CHIPPs
-

Stage One: CHIPP Quality Measurement Tool



- ❑ Modeled after the Public Health Accreditation Standards (Version 1.0 released July, 2011)
 - ❑ Organized around each step in the CHIPP
 - ❑ Content Validity was established based on review by an expert panel of local and state health department leaders and Public Health Accreditation Board staff
-

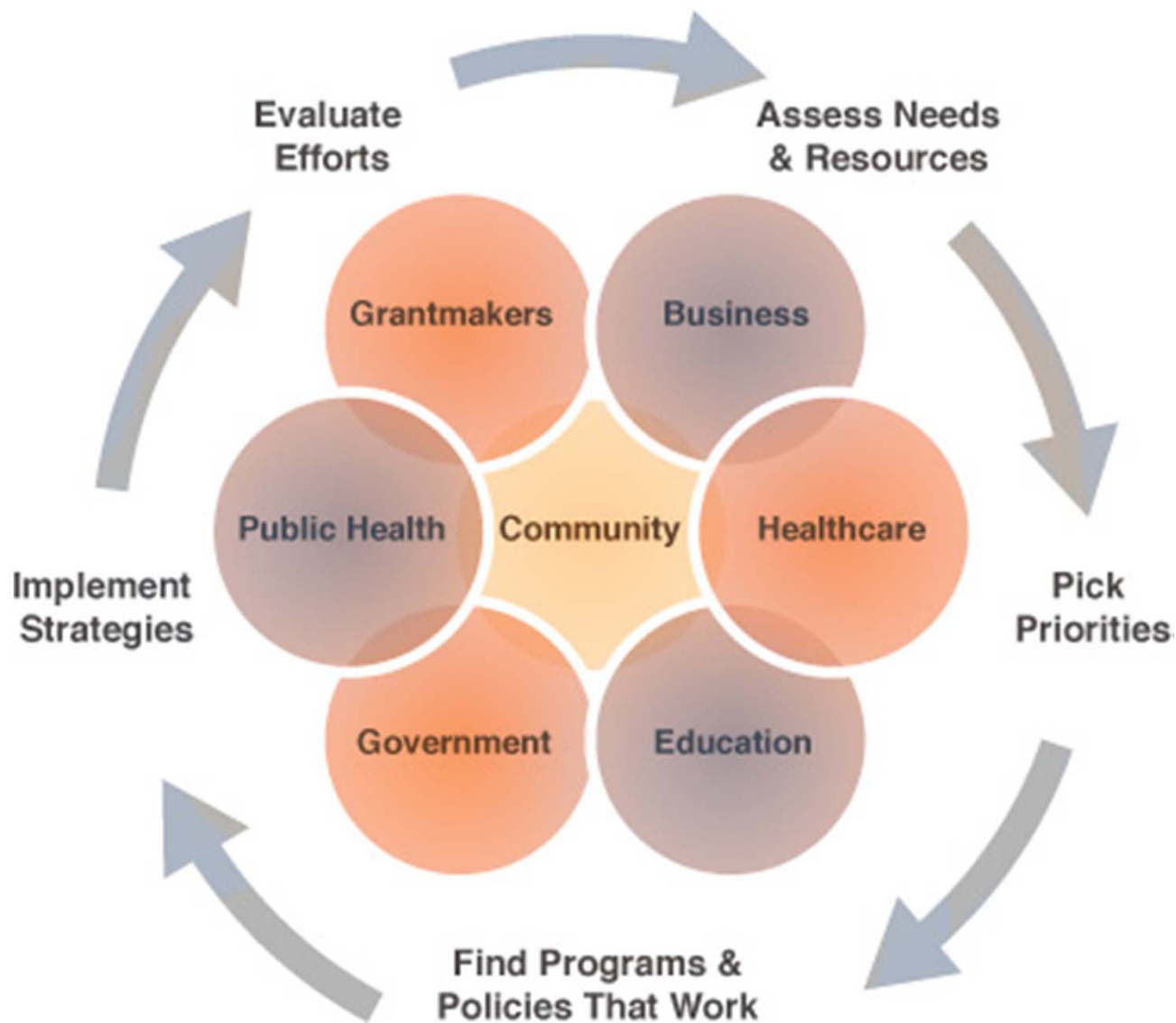
Expert Panel



- ❑ Terry Brandenburg, Medical College of WI & Former West Allis Health Officer
 - ❑ Elizabeth Giese, Division of Public Health
 - ❑ Becky Hovarter, Shawano County Health Officer
 - ❑ Joan Theurer, Marathon County Health Officer
 - ❑ Robin Wilcox, Chief Operations Officer, Public Health Accreditation Board
-

TAKE ACTION

WORK TOGETHER



| Stage | Measure | Documentation |
|---------------|--|--|
| General | The CHA document(s) are electronically available to the public via a website. | Research staff were able to find CHA online. |
| Work Together | The local community at large has had the opportunity to review and comment on the CHA &/or CHIP. | There is evidence that feedback was sought and included in the CHA &/or CHIP. Methods to seek this feedback include publishing in the local press with comment or feedback forms, publication on the department website with a comment form, community/town forums, listening sessions, newsletters, discussions or presentations at other organizations' meetings, etc. |
| Assess Needs | Local data are compared to other agencies, regions, state, or national data. | There are at least two examples of comparison data that compare data from similar data sources over similar timeframes. |
| Prioritize | CHIP contains measurable objectives with time-framed targets. | The CHIP or an associated work plan has measurable objectives and time-framed targets. |

| Stage | Measure | Documentation |
|------------------------------------|---|--|
| Pick Programs & Policies that Work | CHIP identifies improvement strategies that are evidence-informed. | Strategies identified in the plan are evidence-informed, promising practices, or innovative strategies. Innovative strategies are considered evidence-informed if they have a clear foundation and reasoning and a clear evaluation plan to monitor results. Guidance is provided by the National Prevention Strategy, Guide to Community Preventive Services, Healthy People 2020, Healthiest Wisconsin 2020, or What Works for Health. |
| Implement | CHIP identifies individuals and organizations that have accepted responsibility for implementing strategies | The CHIP includes designation of individuals or organizations that have accepted responsibility for implementing strategies outlined in the CHIP. (Does not need to be formal MOU/MOA) |
| Evaluate | CHIP contains a plan for performance indicators for strategies. | CHIP or a companion document indicates what indicators will be used to measure implementation progress. |

STAGE TWO: Measure CHA & CHIP Quality



- Collected all 92 CHA's and CHIP's
 - Scoring currently underway
 - Two researchers score and differences reconciled by one of the Principal Investigators
 - Follow up review and survey with Local Health Officer
-

Examples of Survey Questions



- Have you shared data from your Community Health Assessment (CHA) with the general public?
 - Have you engaged with governing entities, advisory boards, and/or elected officials that may influence policies or strategies proposed in your Community Health Assessment & Improvement Plan?
 - Within the past five years, have you sought feedback from your stakeholders about what has gone well and areas for improvement in the Community Health Improvement Planning Process?
-

STAGE THREE: Comparative Analysis



□ Structural Factors

- Population
- Expenditures
- Region
- Staffing

□ Process Factors

- CHIPP Model
 - # of sectors in partnership
 - New resources identified
-

Opportunities



- New funding:
 - ICTR-CAP at UW-Madison
 - ~\$40,000/year 2012-2015
 - Susan Zahner, Program Director
- National research agendas
 - www.publichealthsystems.org
- PHAST
 - Public health activities & tracking
 - Betty Bekemeier, U of Washington
- QI/PHSSR Overlap....Join Forces???



Link to National Voluntary Public Health Accreditation



- ❑ Measure 10.2.1: *The health department must provide a copy of a policy regarding research...*
 - ❑ Measure 10.2.2: *The health department must document that it has expert staff or outside experts who can analyze research and its public health implications.*
-

Challenges



- Sustainability
- Dissemination/use
- Refine research agenda for Wisconsin
- Engagement of researchers
- Research funding



Lessons learned



- Network:
 - Management
 - Facilitation
 - Communications
 - Resources
 - We can do it!!
- Researchers/practice partners:
 - Willing, interested, able....but.....
 - Priorities
 - Timelines
 - Incentives
 - Funding levels



You can get involved!

Researchers & Practice partners:

- Join the WPHPBRN
- Follow the WPHPBRN activities online
- Apply for funding for PHSSR
- Collaborate with WPHPBRN on a research project



Resources



- Public Health Practice Based Research Network
 - <http://www.publichealthsystems.org/pbrn>
 - Center for Public Health Systems and Services Research (University of Kentucky)
 - <http://www.publichealthsystems.org/phssr>
 - Public Health Systems Research Interest Group (AcademyHealth)
 - <http://www.academyhealth.org/Communities/>
 - Special Issue of Health Services Research on Public Health Services and Systems Research (2009) *Health Services Research*, 44(5)
 - <http://www.rwjf.org/pr/product.jsp?id=492>
 - **IOM: For the Public's Health: Investing in a Healthier Future**
-

Questions?



WPHPBRN Contacts

Susan Zahner

sjzahner@wisc.edu

Patricia Guhleman

Patricia.Guhleman@dhs.wisconsin.gov

Susan Kunferman

skunferman@co.wood.wi.us

Nancy Young

nyoung@instituteforwihealth.org

Visit

www.instituteforwihealth.org/phpbrn_portal/

