

**An Analysis of the Quality of  
Wisconsin's Community Health  
Improvement Plans and Processes  
2011 Wisconsin Health Improvement and Research  
Partnerships Forum  
September 15, 2011**

Julie Willems Van Dijk PhD

Bridget Catlin Booske PhD



UNIVERSITY OF WISCONSIN

**Population Health Institute**

*Translating Research into Policy and Practice*

# Outline

- The Community Health Improvement Plans and Processes (CHIPP) Cycle
- Why CHIPP?
- CHIPP Quality Measurement Tool
- What's Next?
- Discussion

# TAKE ACTION

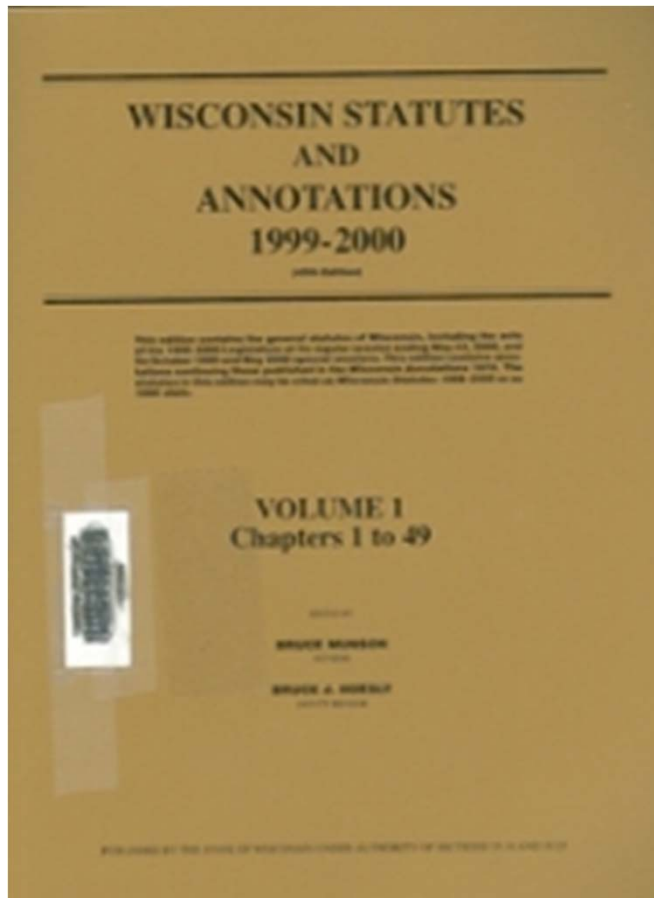
WORK TOGETHER



# Why CHIPP?

- Mandates

# Local Health Departments



*s.251.05(3)(c) A local health department shall involve key policy makers and the general public in determining and developing a CHIP... AND s.251.05(3) Develop public health policies and procedures for the community; Complete a community health assessment; collect, review and analyze data on community health and identify population groups, families and individuals at high risk of illness, injury, disability or premature death. Participate in development of community plans that include identification of community health priorities, goals and objectives to address current and emerging threats to the health of individuals, families, vulnerable population groups and the jurisdiction as a whole, and contribute to the planning efforts that support community strengths and assets. Assure programs and services that focus on reducing health disparities and are based on evaluation of surveillance data and other factors that increase actual or potential risk of illness, disability, injury, or premature death.*

# Not for Profit Hospitals

Every 3 years:

Community Health

Needs Assessments

With community partners  
and public data

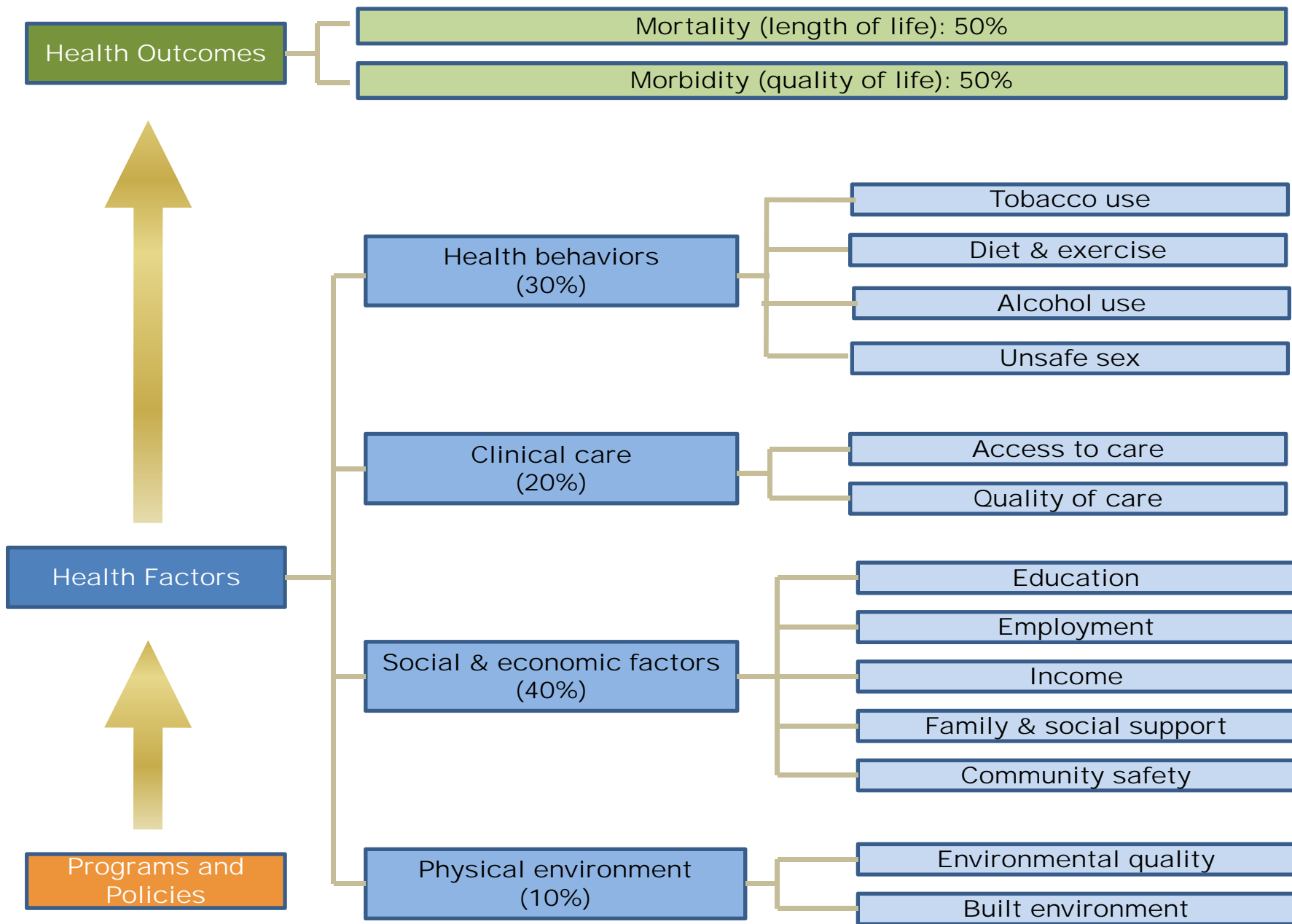
Identify plans and roles for  
health improvement

## The Affordable Health Care Act



# Why CHIPP?

- Mandates
- Making meaningful change





# Why CHIPP?

- Meeting mandates
- Making meaningful change
- Maximizing resources

# CHIPP Quality Measurement Tool

- Modeled after the Public Health Accreditation Standards (Version 1.0 released July, 2011)
- Organized around each step in the CHIPP
- Content Validity will be based on review by local and state health department leaders and Public Health Accreditation Board staff or reviewers

Stage	Measure	Documentation
Work Together	The local community at large has had the opportunity to review and comment on preliminary findings of the community health assessment portion of the CHIPP.	Methods to seek this feedback include publishing in the local press with comment or feedback forms, publication on the department website with a comment form, community/town forums, listening sessions, etc.
Assess Needs	Local data are compared to other agencies, regions, state, or national data	There are at least two examples of comparison data.
Prioritize	CHIP contains measurable objectives	The CHIP or an associated workplan has measurable objectives and time-framed targets
Pick Programs & Policies that Work	CHIP identifies improvement strategies	Strategies identified are evidence-based or promising practices. Guidance is provided by the Guide to Community Preventive Services, Healthy People 2020, Healthiest Wisconsin 2020, or What Works for Health.

# What's Next?

- Finalize tools
- Measure quality of all WI CHIPPs (N=92)
- Follow up survey with local health officers for missing data
- Comparative analysis: How does CHIPP quality differ based on structural and process factors
- *Long Term*: Does CHIPP quality predict health outcome improvement?

# DISCUSSION